

## Wacom Intuos Pro Paper edition, M size (A5 paper size)



This super-slim tablet design tablet is equipped with a paper clip on top, and two pencils : a classic plastic tip pencil (Pro Pen 2 ; features 8192 levels of pressure) and a Finetip (0.4mm) drawing pencil.



This tablet is touch aware. Touch can be disabled thanks to a switch on its side.  
This tablet has Bluetooth communication and classical USB wire.

### **BUT :**

Bluetooth does not transmit pen tip position while you're drawing. It is only here to send your drawing to the computer once it's finished.

It is the same behavior with the finetip pencil : it cannot transmit its position on the tablet in real-time to the computer. Samples are stored into the tablet, and send via Bluetooth, once finished.

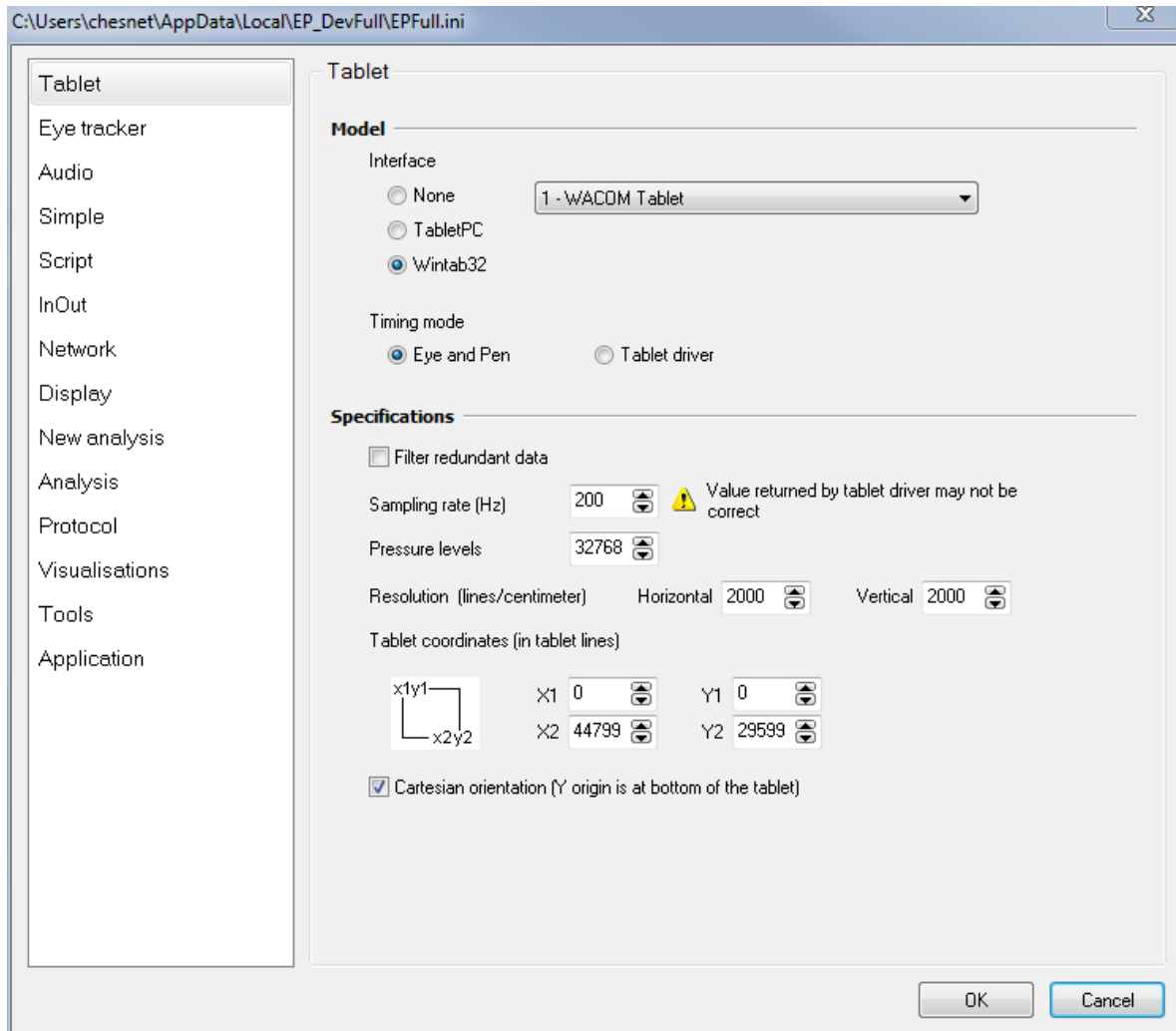
This same with the optional Ballpoint Pen.

This « duet »' (Finetip and Bluetooth ) is devised for the following workflow : you take your tablet and Finetip to somewhere, away from any computer, draw, write, sketch, and so. Back at home/office, you download your products into your computer(s) /phone(s) via a special cloudified application : Wacom Inkspace.



So, to perform real-time writing/drawing with Eye and Pen, you still have to purchase a good old inking pen (Intuos 4 model KP130).

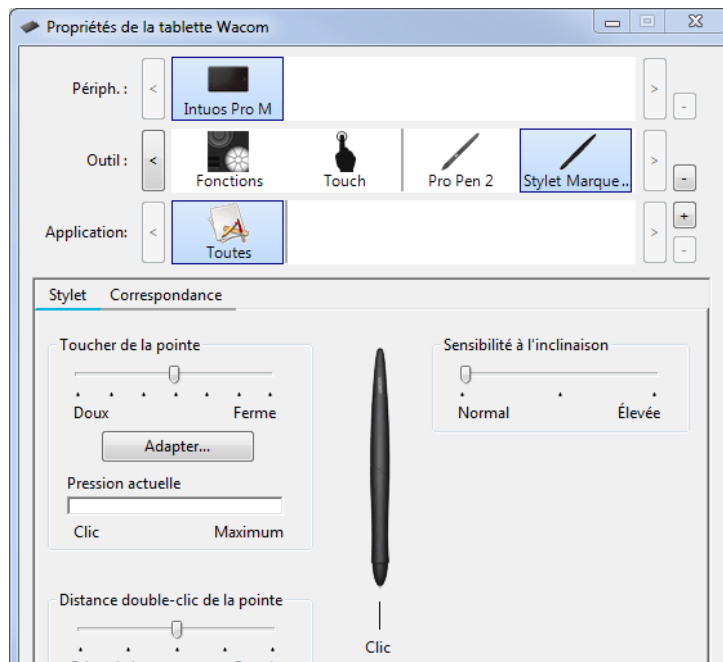
Once driver is installed, Eye and Pen can handle the tablet.



As you may notice, parameters are good enough: more than 44000 lines horizontally (5080 lpi in documentation), announced sampling rate of 200 Hz (checked later), more than required pressure levels...



The good news is that it is seamlessly recognized by the Intuos Pro tablet (see figure below).



On the performance side of thing, a good 200 Hz sampling rate is achieved in Eye and Pen.

