

## How to use a Wacom Intuos 4 tablet in « Portrait »

Wacom Intuos4 tablet has a number of features : ExpressKeys, Radial menu, Touch ring and onboard LCD display. These accessories are at the edge of the tablet. The tablet can be rotated in such a way that it can be then located to the top, to the right, to the bottom or to the left side of the tablet.



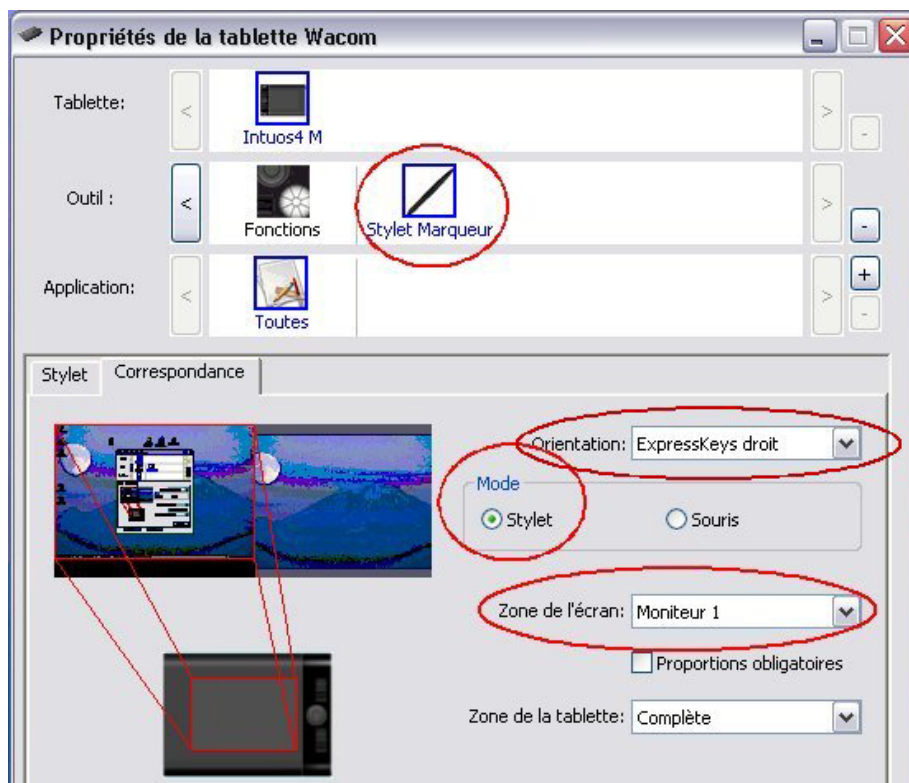
Then , the tablet driver should be informed of your choice.

In Windows Start menu, select Control Panel, then Wacom tablet.

First of all, select the pen icon (click on it), then the **Matching** tab.

In the scroll down list named **Orientation**, set if the Express keys are to the left, right, top or bottom of the tablet.

A preview shows the current tablet settings.

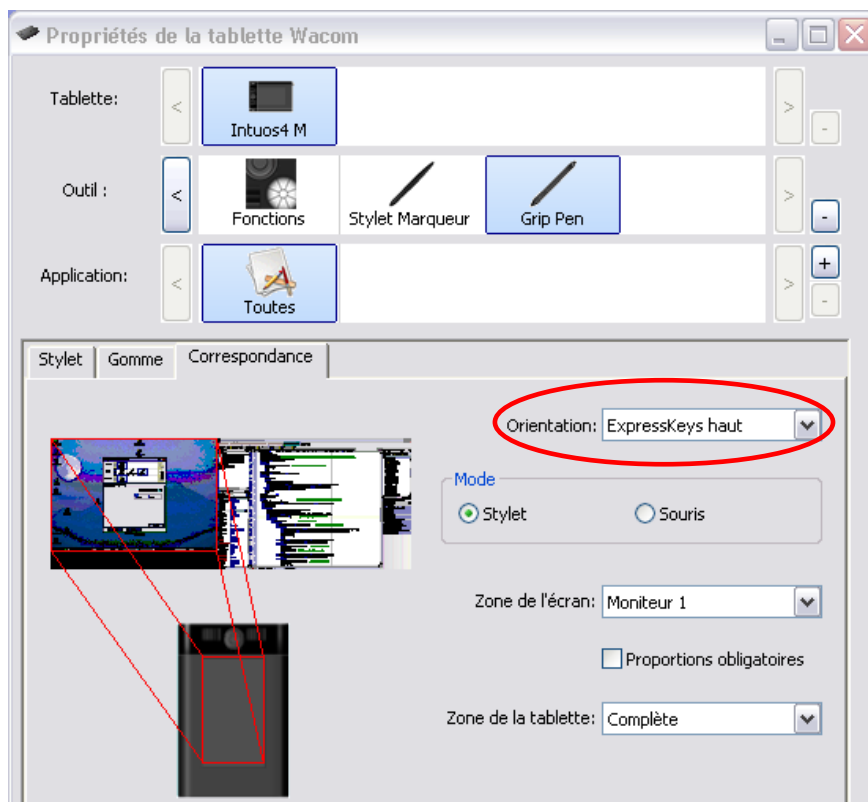


In the scroll down list named **Screen area**, select the display device matching with your tablet. This is usually the first screen (« display 1 »).

If you wish to use the tablet in portrait orientation, first (physically) rotate the tablet.



Then, set settings to say that ExpressKeys are now at the top of the tablet.



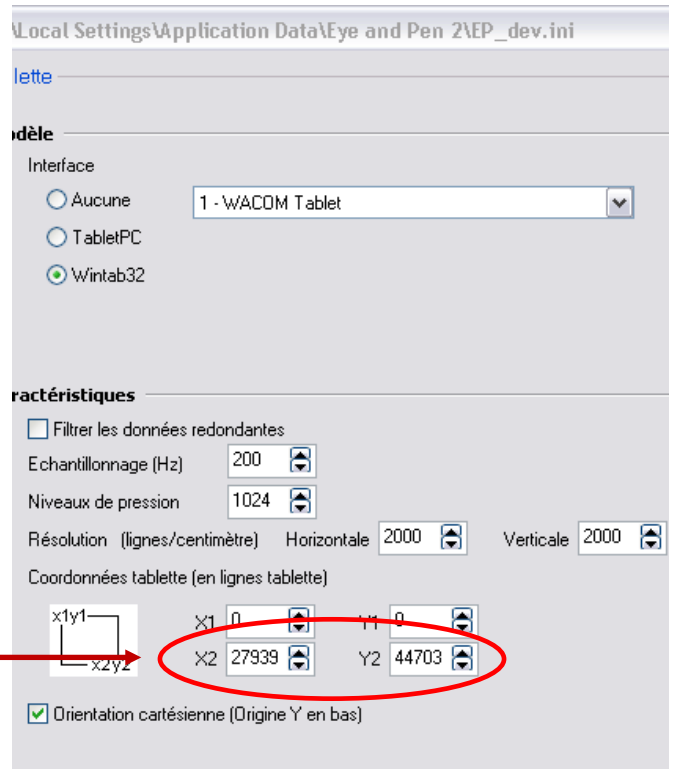
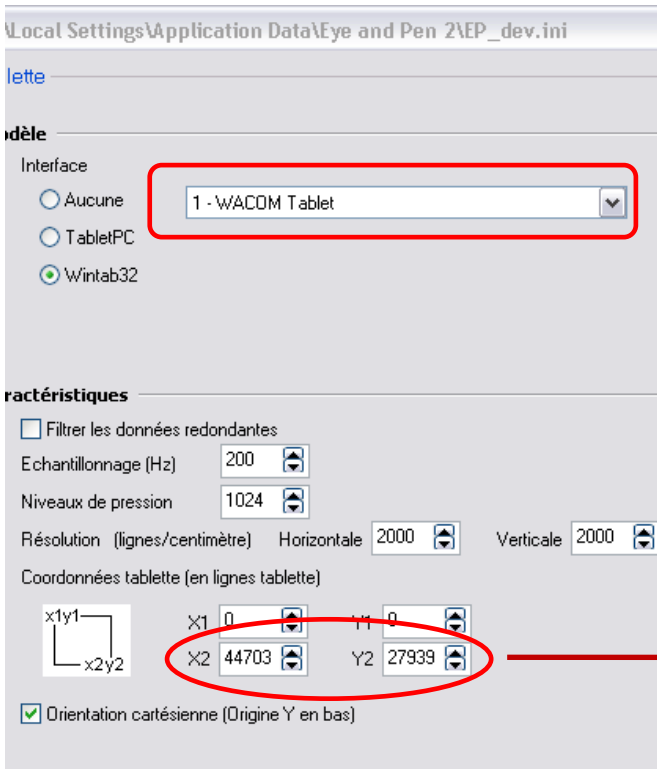
Preview now shows the new setting.

**Caution** : these settings are specific to each pencil/tablet cursor.

Close the tablet control panel and start Eye and Pen.

Select the menu File | Configuration | Acquisition, Tablet tab.

If your tablet has already been used in Eye and Pen in Landscape orientation, reselect the tablet in the scroll down list to update its coordinates.



You can check that the settings are correct with the help of the menu Device tests | Tablet | Visual.

