

## Using the participant Id to store information.

Thanks to an option in Extractions/Preferences, it is possible to dispatch the participant Id “components” in different columns when extracting data.

Let’s take an example.

My experiment has 3 conditions (called “C1”, “C2” and “C3”). Testing will take place at 2 moments, morning or afternoon (called “M1” and “M2”). I’m also expecting an effect of genre, male or female (called “G1”, “G2”).

I can name participants with a number followed by the variables names, each separated with an underscore letter “\_”. For example, the participant 044 will be tested in condition 2, on morning and is a girl. The matching participant Id will be: 044\_C2\_M1\_G2.

Accordingly, I set the matching option in Extraction/Preferences/Data.

**Activate this option** →  Add participant ID to each line

**Activate the dispatching function** →  Parse participant ID in columns

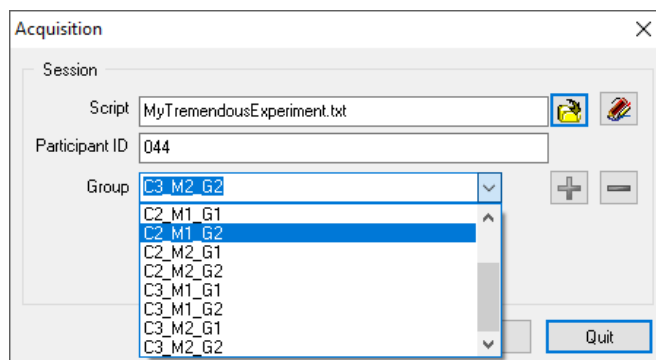
**Set the letter that will be used as a separator to dispatch the participant ID into columns** → Separator

The data files created will have participant Id dispatched in columns, allowing easy sorting on variables values or for direct importing into statistical software.

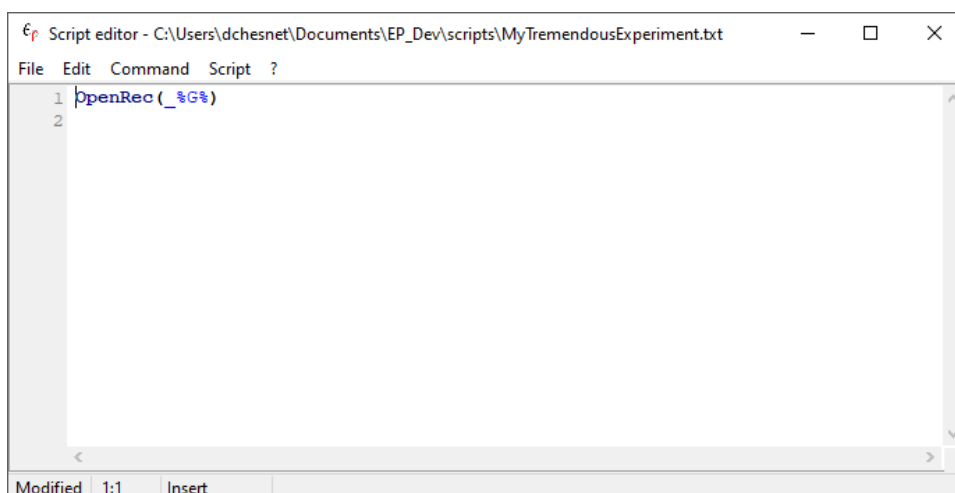
	A	B	C	D	E	F	G	H	I
1	Participant	Id1	Id2	Id3	SeqNum	Begin	End	Label	St
2	44	C2	M1	G2	1	24	300	a	
3	44	C2	M1	G2	1	24	300	a	
4	44	C2	M1	G2	2	936	1675	b	
5	44	C2	M1	G2	2	936	1675	b	
6	44	C2	M1	G2	2	936	1675	b	
7	44	C2	M1	G2	2	936	1675	b	
8	44	C2	M1	G2	3	2475	2735	c	
9	44	C2	M1	G2	3	2475	2735	c	
10	44	C2	M1	G2	3	2475	2735	c	
11	44	C2	M1	G2	4	3195	3779	d	
12	44	C2	M1	G2	4	3195	3779	d	
13	44	C2	M1	G2	4	3195	3779	d	
14	44	C2	M1	G2	4	3195	3779	d	
15	44	C2	M1	G2	5	4291	4619	e	

Figure: extracted data file opened in a spreadsheet

To go a little further, it is possible to use the group scroll-down list of the Acquisition/Script dialog box to “prepare” the additional part of the participant Id.



Then, I can use the Group selected to name my recording in script, using the keyword “%G%” that retrieves the Group name selected.



The created file will be named “044\_C2\_M1\_G2.tab”.